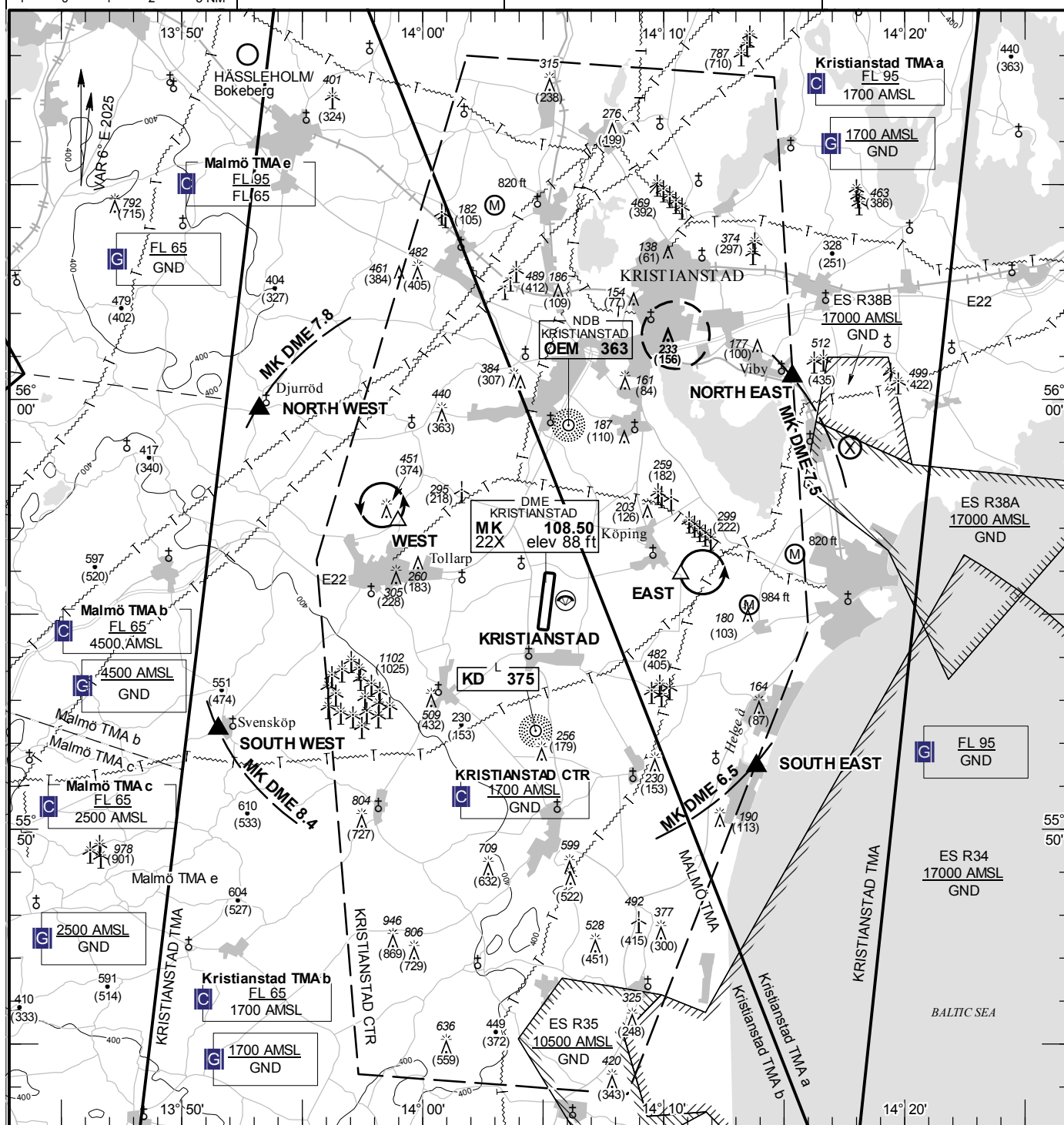


TA 5000 AMSL

129.355

**KRISTIANSTAD
SWEDEN**



- 1 SQUAWK 7600
- 2 Enter CTR via NORTH WEST/
SOUTH WEST – Holding WEST
or via NORTH EAST/SOUTH EAST –
Holding EAST at or below 1500 ft AMSL to
traffic circuit.
Transmit blind your intentions.
- 3 Flash LDG-lights and watch TWR for optical
signals.

Departure RWY 19 right turn. Parajumping area on airfield.

RWY NR	THR ELEV	PAPI (MEHT)
01	77 ft	Left/3.00° (50 ft)
19	73.8 ft	Left/3.25° (59 ft)

See GEN 2.3

NORTH EAST: East of Viby 560031N 0141520E
SOUTH EAST: Mouth of
river Helge å 555127N 0141351E
SOUTH WEST: Svensköpp 555219N 0135131E
NORTH WEST: Djurröd 555946N 0135313E

EAST: Hold east of Köpinge, east of point
555555N 0141043E

WEST: Hold north of Tollarp, north west of
point 555709N 0135858E

CHANGE: Editorial

AIRAC AIP AMDT 3/2025 **12 JUN 2025**

Reverse side intentionally blank